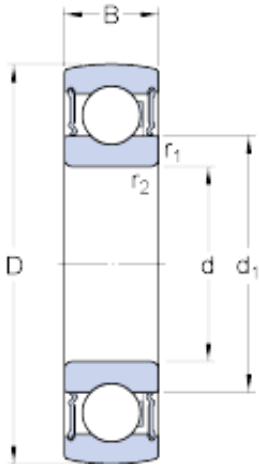




BEARINGS(UK)LTD.



30 mm x 62 mm x 16 mm skf 1726206-2RS1
Insert bearings (Y-bearings)

Bearing No. 1726206-2RS1

1726206-2RS1 Bearing 2D drawings and 3D CAD models

Size	62x30x16 mm
Bore Diameter	62 mm
Outer Diameter	30 mm
Width	16 mm
d	30 mm
D	62 mm
B	16 mm
d ₁	40.36 mm
r _{1,2} - min.	1 mm
Basic dynamic load rating - C	19.5 kN
Basic static load rating - C ₀	11.2 kN
Fatigue load limit - P _u	0.475 kN
Limiting speed	7500 r/min
Calculation factor - f ₀	14
Category	Insert Bearings Spherical OD
Inventory	0.0
Manufacturer Name	SKF
Minimum Buy Quantity	N/A
Weight / Kilogram	0.18
EAN	7316576620201
Product Group	M06110
Inner Race Profile	Standard Inner Ring
Outer Race Profile	Spherical



BEARINGS(UK)LTD.

Relubricatable	No
Seal Type	RS1 Seal
Mounting Method	Shaft Mount
Rolling Element	Ball Bearing
Snap Ring	No
Long Description	30MM Bore; Standard Inner Ring; Ball Bearing; 16MM Length Thru Bore; 16MM Outer Race Width; 62MM Outside Diameter; Not Relubricatable; RS1 Seal Seal; Shaft Mount Mounting Method; No Snap Ring
Inch - Metric	Metric
Other Features	Single Row Standard Duty Metric
Category	Insert Bearings
UNSPSC	31171536
Harmonized Tariff Code	8482.10.50.00
Noun	Bearing
Keyword String	Insert
Manufacturer URL	http://www.skf.com
Manufacturer Item Number	1726206-2RS1
Weight / LBS	0.397
Bore	1.181 Inch 30 Millimeter
Outside Diameter	2.441 Inch 62 Millimeter
Outer Race Width	0.63 Inch 16 Millimeter
Length Thru Bore	0.63 Inch 16 Millimeter
bore diameter:	30 mm
internal clearance:	C0
outside diameter:	62 mm
operating temperature range:	-40 to +210 ° F
overall width:	16 mm
finish/coating:	Uncoated



BEARINGS(UK)LTD.

bore type:	Round
outer ring width:	16 mm
closure type:	Double Sealed
maximum rpm:	7500 RPM
snap ring included:	Without Snap Ring
series:	17262
d_1	40.36 mm
$r_{1,2}$ min.	1 mm
Basic dynamic load rating C	19.5 kN
Basic static load rating C_0	11.2 kN
Fatigue load limit P_u	0.475 kN
Limiting speed ¹⁾	7500 r/min
Calculation factor f_0	14
Mass complete bearing	0.19 kg
Rubber seating ring	RIS 206 A